



Park View

at LAUREL

Apartment Homes for Seniors

Your New Lifestyle Begins Here

Services

- Social and recreational activities
- Education and health seminars
- Monthly community updates with management
- 24 hour maintenance
- Convenient business services, including stamps for purchase and use of office equipment
- Assistance with small home improvement projects
- Accessibility to food programs such as Meals on Wheels
- Excellent Public Transportation

Conveniently Located Near

- Laurel Town Center
- Phelps Senior Center
- Health Care providers
- Movie Theatres
- Restaurants

Community features

- Beautifully landscaped courtyard and patio
- Electronically controlled lobby entrance
- Community room with kitchen
- Game/Activity room
- Lending library and computer center
- Exercise room
- Wellness suite
- Beauty and Barber services
- Laundry facility with convenient lounge
- Elevator

Apartment features

- Bathroom with enhanced safety features
- Monitored emergency pull cords
- Smoke alarms and fire sprinklers
- Fully-equipped kitchen
- Mini-blinds on all windows
- Handicapped accessible and adaptable



Park View at Laurel

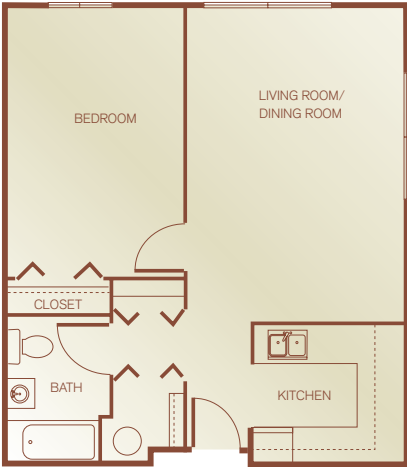
9000 Briarcroft Lane · Laurel, Maryland 20708

Phone: (301) 490-1526 · Fax: (410) 880-0921

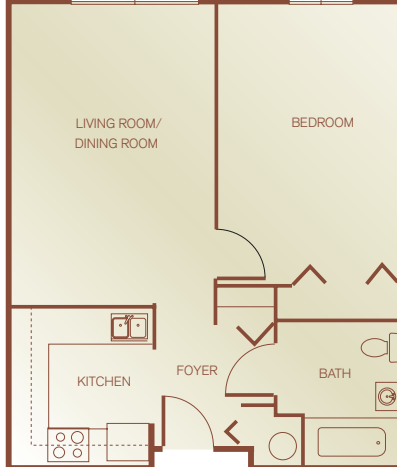
Email: parkviewbelair@sheltergrp.com



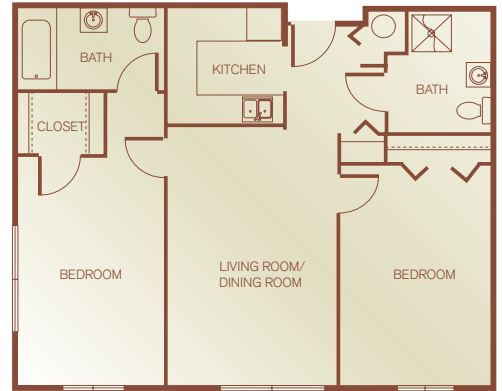
Floor Plans & Directions



Plan 1BC
1 Bedroom, 1 Bath
608 Square Feet



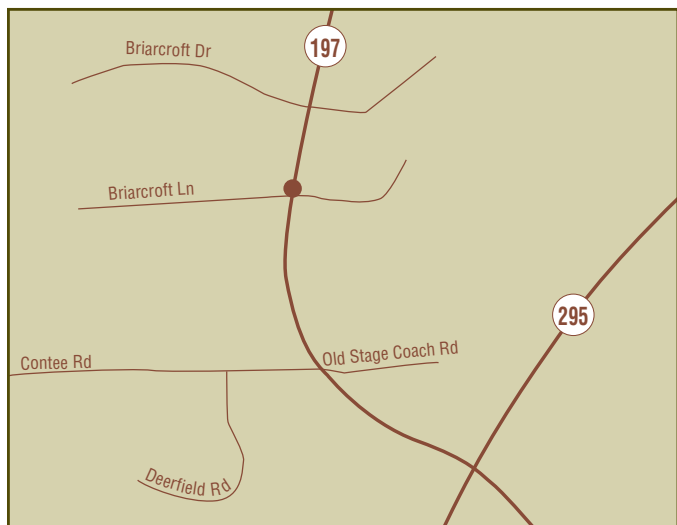
Plan 1B Adaptable
1 Bedroom, 1 Bath
612 Square Feet



Plan 2B-HC
2 Bedroom, 2 Bath
890 Square Feet

<i>Apartment Availability</i>
<i>Available Apartment</i>
<i>Monthly Rent</i>
<i>Security Deposit</i>
<i>Application Fee</i>

Park View is committed to Equal Housing Opportunities for people of all races, religions, ethnic groups, sexual orientation and disabilities, and all others protected by federal, state, or local law.



From MD-295 South take the MD-197 (exit number 11) toward Bowie-Laurel. Turn right onto MD-197 North/Laurel Bowie Rd continue for about 1.3 miles. Turn right onto Briarcroft Ln.

Park View at Laurel

9000 Briarcroft Lane · Laurel, Maryland 20708
Phone: (301) 490-1526 · Fax: (410) 880-0921
Email: parkviewbelair@sheltergrp.com

