



Park View

at CHELTENHAM

Apartment Homes for Seniors

Your New Lifestyle Begins Here

Services

- Social and recreational activities
- Education and health programs
- Monthly community updates with management
- 24 hour maintenance
- Convenient business services, including stamps for purchase and use of office equipment
- Assistance with small home improvement projects
- Transportation available through local bus service

Conveniently Located Near

- Senior Center
- Retail Mall
- Churches
- Library
- Parks
- Public Transportation

To qualify for an apartment at Park View, you must meet minimum age restrictions with qualifying incomes. Rental assistance is welcome. Pet friendly communities.

Community features

- Beautifully landscaped courtyard and patio
- Electronically controlled lobby entrance
- Community room with kitchen
- Media room
- Library
- Walking path
- Fitness center
- Beauty and Barber services
- Laundry facility with convenient lounge
- Elevator

Apartment features

- Bathroom with enhanced safety features
- Monitored emergency pull cords
- Smoke alarms and fire sprinklers
- Individually controlled heat and AC
- Fully-equipped kitchen
- Mini-blinds on all windows
- Handicapped accessible and adaptable
- Affordable rents



Park View at Cheltenham

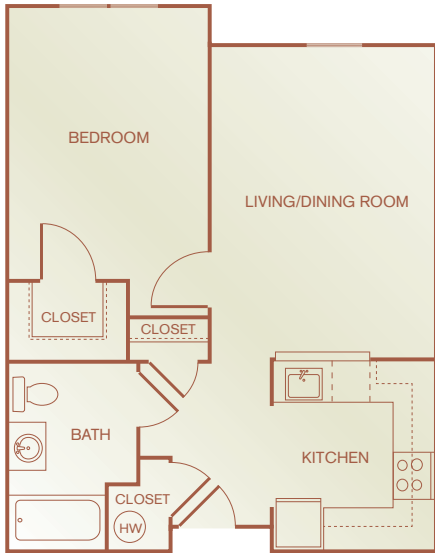
990 Ashbourne Road · Elkins Park, Pennsylvania 19027

Phone: (215) 572-4490 · Fax (215) 572-0803

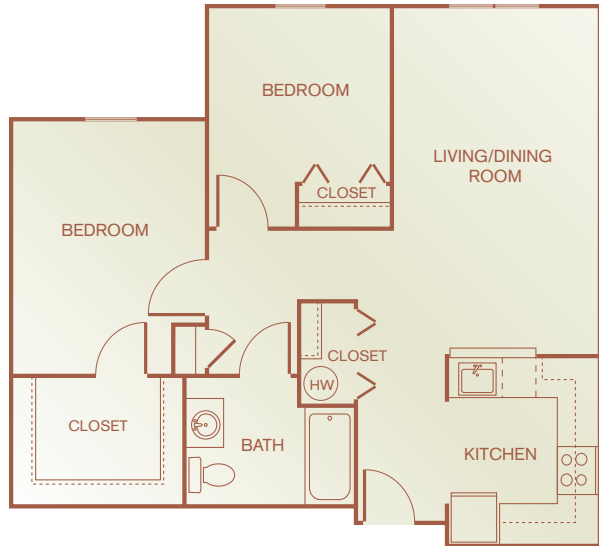
Email: parkviewcheltenham@sheltergrp.com



Floor Plans & Directions



1 Bedroom
613 Square Feet

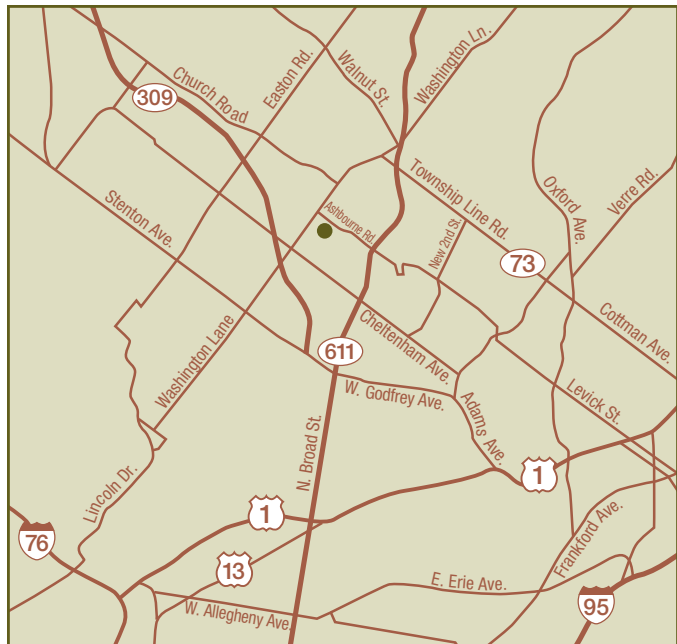


2 Bedroom
832 Square Feet

Floor plans shown are representative and exact floor plans and measurements may vary. Additional floor plans available.

<i>Apartment Availability</i>
<i>Available Apartment</i>
<i>Monthly Rent</i>
<i>Security Deposit</i>
<i>Application Fee</i>

Park View is committed to Equal Housing Opportunities for people of all races, religions, ethnic groups, sexual orientation and disabilities, and all others protected by federal, state, or local law.



From I-76 take US-1 North toward Roosevelt Blvd. Take the Broad St. exit onto St. Luke St. Turn left on N. Broad St.(PA-611), and bear right to follow PA-611. Turn left on Ashbourne Rd. Park View at Cheltenham will be on your left.

Park View at Cheltenham

990 Ashbourne Road · Elkins Park, Pennsylvania 19027

Phone: (215) 572-4490 · Fax (215) 572-0803

Email: parkviewcheltenham@sheltergrp.com



EQUAL HOUSING OPPORTUNITY