



# Park View

at BLADENSBURG

Apartment Homes for Seniors

Your New Lifestyle Begins Here

## *Services*

- Social and recreational activities
- Education and health seminars
- Monthly community updates with management
- 24 hour maintenance
- Convenient business services, including stamps for purchase and use of office equipment
- Assistance with small home improvement projects
- Accessibility to food programs such as Meals on Wheels
- "Call A Bus" Transportation available

## *Conveniently Located Near*

- Capital Plaza
- Cheverly Medical Center
- Community Center
- Baltimore/Washington Parkway
- Metro Bus
- Metro Rail

## *Community features*

- Beautifully landscaped courtyard and patio
- Electronically controlled lobby entrance
- Community room with kitchen
- Game/Activity room
- Lending library and computer center
- Exercise room
- Wellness suite
- Beauty and Barber services
- Laundry facility with convenient lounge
- Elevator

## *Apartment features*

- Bathroom with enhanced safety features
- Monitored emergency pull cords
- Smoke alarms and fire sprinklers
- Fully-equipped kitchen
- Mini-blinds on all windows
- Handicapped accessible and adaptable



### *Park View at Bladensburg*

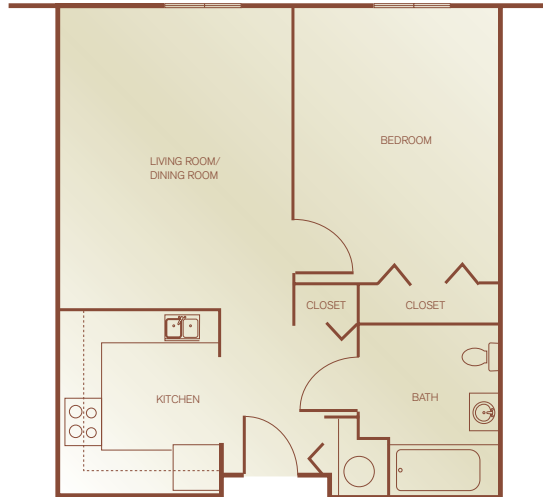
4204 58th Avenue · Bladensburg, Maryland 20710

Phone: (301) 699-9785 · Fax: (301) 699-9862

Email: parkviewbladensburg@sheltergrp.com



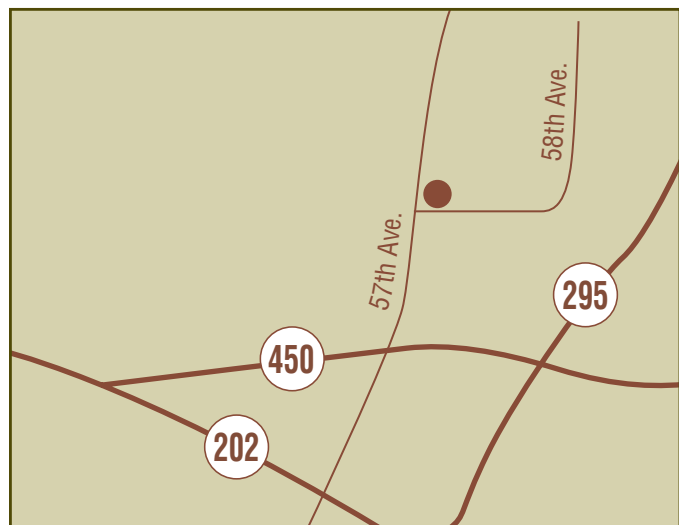
# Floor Plans & Directions



**Plan 1B-Adapt**  
1 Bedroom, 1 Bath  
575 Square Feet

<i>Apartment Availability</i>
<i>Available Apartment</i>
<i>Monthly Rent</i>
<i>Security Deposit</i>
<i>Application Fee</i>

*Park View is committed to Equal Housing Opportunities for people of all races, religions, ethnic groups, sexual orientation and disabilities, and all others protected by federal, state, or local law.*



Take I-295 South towards Washington (B/W Pkwy.) to Exit Rt. 450-Bladensburg. Bear right onto Rt. 450 (Annapolis Rd.). At the first light turn right onto 57th Avenue. Go to stop sign, make a right on 58th Avenue. Park View at Bladensburg is at the top of the hill on your left.

## ***Park View at Bladensburg***

4204 58th Avenue · Bladensburg, Maryland 20710  
Phone: (301) 699-9785 · Fax: (301) 699-9862  
Email: parkviewbladensburg@sheltergrp.com



EQUAL HOUSING OPPORTUNITY